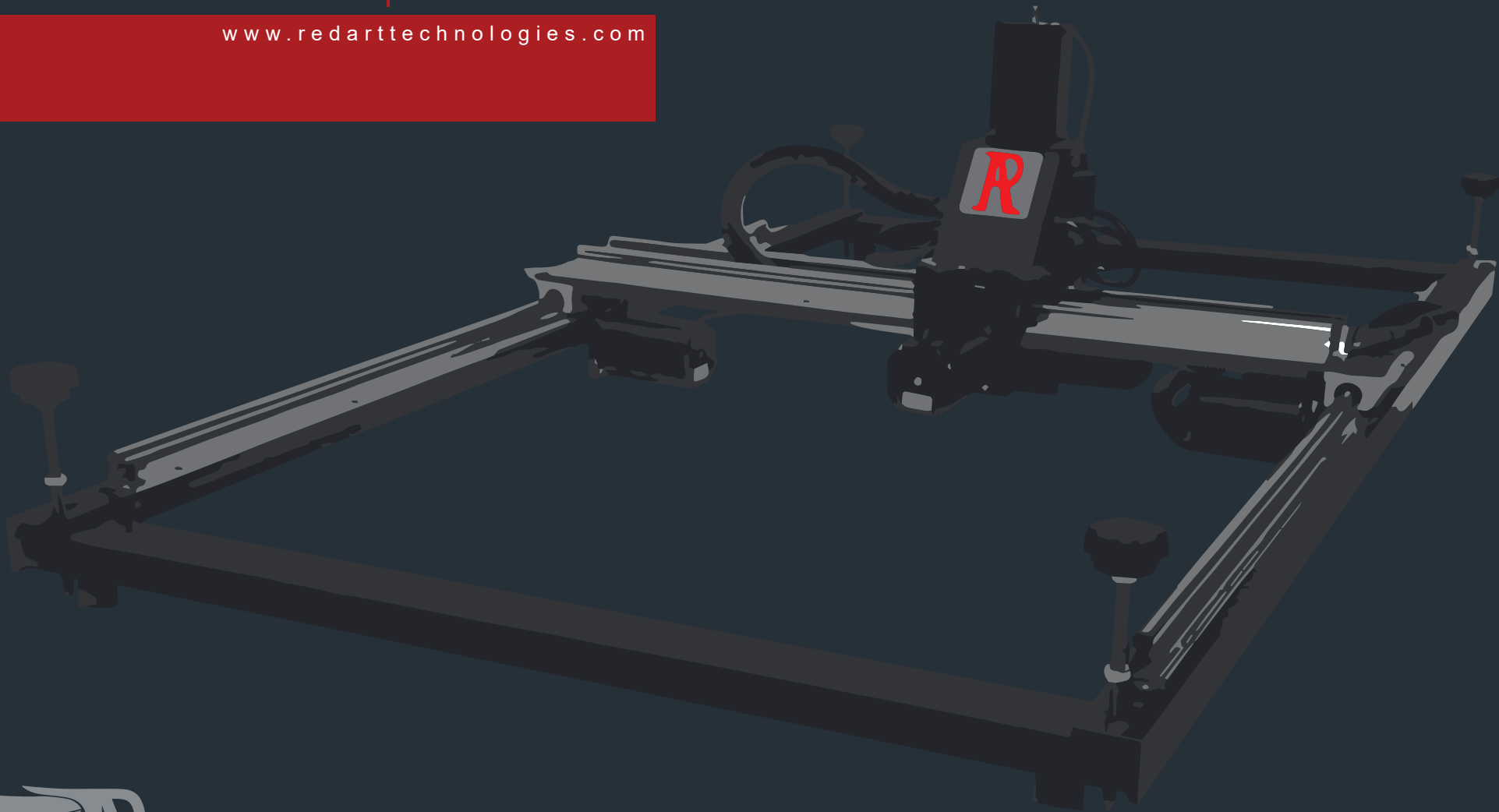


CNC Pro | Portable Concrete Engraving System

www.redarttechnologies.com



your dream is our expression

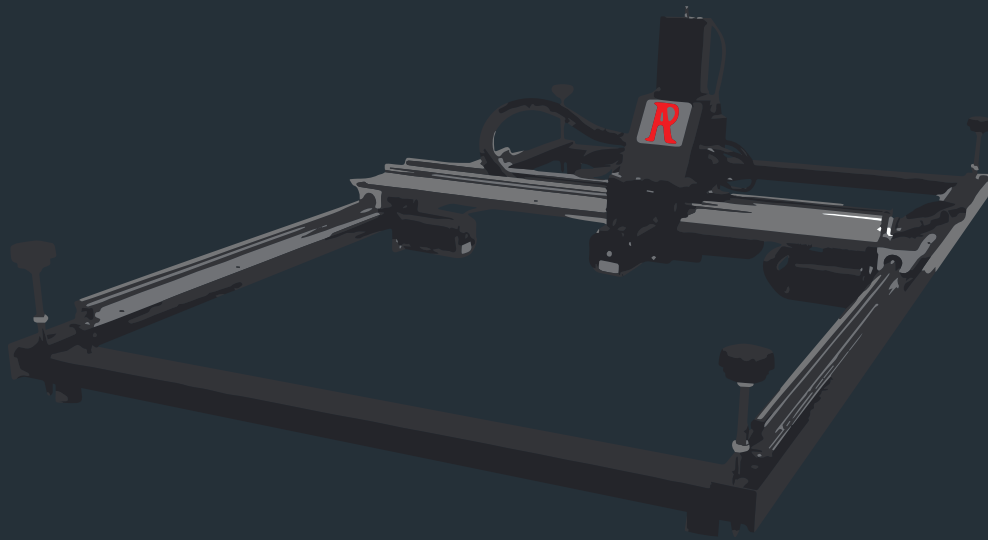
table of contents

02	Introduction
03	CNC Pro - Engraving System
07	What Does it Take to Get Started?
09	Concrete
11	Any Size
12	Vertical Applications
13	Epoxy
15	Wood
16	Boulders & Beyond
17	Training & Support

introduction

RedArt Technologies, founded by Henry Ashworth in Bountiful Utah, developed the CNC PRO portable engraver to meet the demand for customized surfaces for both businesses and non-profit organizations. The CNC PRO combines top-of-the-line technology with a sophisticated, motor-driven mechanical CNC system, all in a custom military grade travel case. It's a low-cost entry platform with full-service training and continued support. Our motto, "Your Life is Our Expression," reflects our commitment to excellence and to ensuring that our customers and franchisees thrive with our CNC technology.

CNCPro



RedArt Technologies provides and continues to improve a portable, precision-driven CNC engraving machine. We ensure our clients receive quality products, extensive training, continued support and the latest advancements in CNC technology.

The RedArt Technologies CNC Pro is the first portable engraving system designed to travel anywhere and engrave anything on almost any surface. Shipped and stored in its own carrying case, the CNC Pro is protected in a waterproof, high-density plastic case and secured in customized foam lining that provides the durability to make it the most mobile machine of its kind and ensures the protection of all components.

Adjustable Rails System

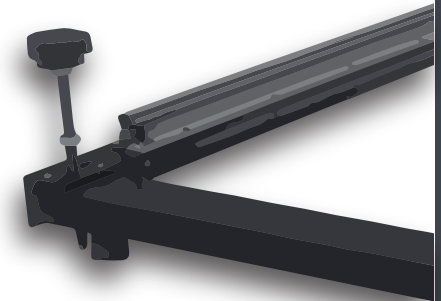
The design of the CNC Pro is truly groundbreaking. It is the world's first portable CNC machine that can be disassembled and reassembled at any job site. This innovative feature makes it incredibly versatile and adaptable to any workspace. Plus, with the option to add Linear Rail extensions, the size of the machine can be easily adjusted to achieve the perfect engraving size within minutes.

Floating Z-Axis

With its unique floating head design, the CNC Pro is capable of engraving on even the most uneven surfaces with ease. Its Z-Axis can be easily unlocked or locked to allow for engraving on a wide range of materials including wood, plastic, acrylic, concrete, glass, rubber, granite, tile, drywall, soft metals, and more. This means that virtually any solid surface can be engraved with precision and control, ensuring the highest quality results for your project.

Rigid Frame and Components

The CNC Pro's frame is built with aluminum rails, hardened-steel pins, and precision machined joints, setting a new standard for ruggedness, durability, and versatility in CNC machines. We pride ourselves on using high-quality components that deliver superior precision and control, ensuring that our clients are impressed every time they use the machine. Furthermore, our electronics are covered by a one-year warranty and are designed and built using the latest CNC technology available in the industry. With the CNC Pro, you can trust that you are getting a reliable and advanced piece of equipment that will deliver consistent and outstanding results for years to come.





Top of The Line Electronics

RedArt Technologies utilizes cutting-edge CNC technology to ensure precision and control in every engraving project. Our machine's X, Y, and Z axis inputs are seamlessly controlled by an independent, motor-driven system that connects to your laptop via an ethernet port. For added protection, the laptop control board is encased in a hard-plastic, water-resistant case that safeguards against dust, dirt, and moisture both during operation and transportation.

Vertical Capability

The CNC Pro can engrave on both horizontal and vertical surfaces with a depth of up to 2 inches, offering limitless design possibilities for your projects.

A person wearing a black jacket and a black cap is leaning over a robotic arm in a factory setting. The robotic arm is mounted on a metal frame and has a red tip. The person is looking at the arm, which is positioned over a work area marked with white lines on the floor. The background is a blurred industrial environment.

BE YOUR OWN BOSS

1-855-926-2776

getting started

Equipment

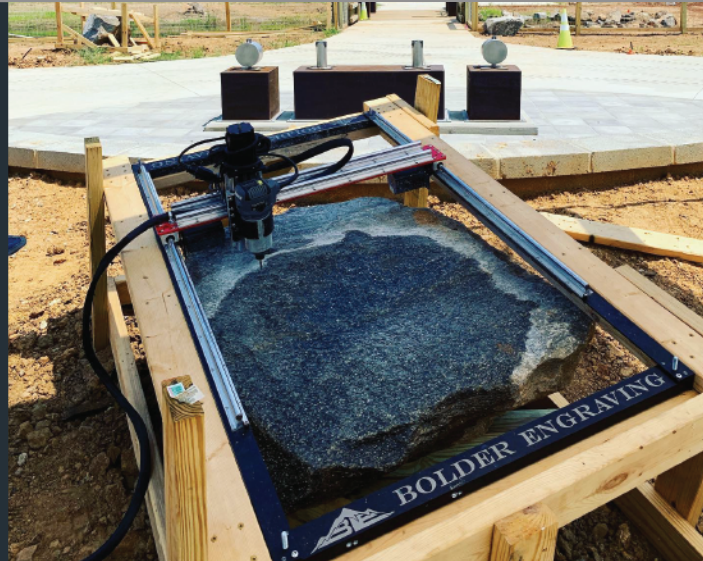
The CNC Pro stands out from other portable decorative concrete engraving systems thanks to its use of advanced CNC (computer numeric controlled) technology. This allows users to easily engrave architect CAD designs with just a few clicks of a mouse, making it a powerful and efficient tool for any project.

At RedArt Technologies, we understand that time is money. That's why we've developed a modern self-paced training system that enables our users to start earning right away. Our innovative approach has been recognized as the best small business opportunity of 2019, and we're proud to offer regular training seminars and on-site options to ensure our users are equipped with the knowledge and marketing materials needed to succeed. With RedArt Technologies, starting your own business has never been easier.

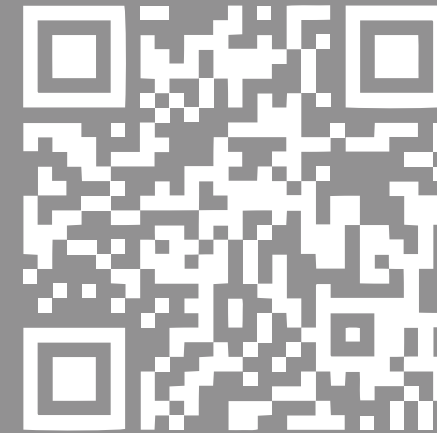
Pricing

Decorative concrete engraving services can vary greatly in price depending on factors such as location, complexity, and materials used. The cost per square foot for a job can range anywhere from \$65 for basic engraving to \$200 for intricate epoxy inlays.

As for the profit margins you can expect with the RedArt Technologies engraving system, it ultimately depends on the prices you set for your services and the number of jobs you complete. However, with a starting cost of \$25,000 for the system and no franchise or royalty fees, the potential for a profitable business is certainly there. As with any entrepreneurial venture, success will require dedication and hard work.



CUSTOMER SUCCESS STORY



concrete



In today's world, many people are searching for a "unicorn" or "silver bullet" that will instantly bring them millions of dollars online, without any effort. However, this is not a realistic expectation for most people. It's more like winning the lottery - a few lucky individuals may experience it, but most people will have to keep working hard to make a living.

Fortunately, there are still many ways to make decent money in the real world, and the CNC Pro is an excellent tool for doing so. This portable CNC machine can be taken to any job site and used to engrave on a wide range of surfaces, including concrete, stone, wood, glass, and more.

If you're looking for ideas on how to use the CNC Pro to make money, here are a few to consider.

Business Logos

One of the most profitable services we offer is working with business owners. As Henry, the owner of RedArt Technologies, often says, "The money is in the concrete." This is due to the novelty of the service. While stamped or decorative concrete has been around for some time, the ability to place a company logo in the concrete and then fill it with epoxy creates a unique and attention-grabbing feature that



Sales Ideas:

One approach to attracting business owners is to take a display board to different local stores, showcasing photos of past work and samples of the designs available. This can initiate conversations with interested individuals. Additionally, the CNC Sales Playbook is available to help guide potential customers through the process. With rates starting at \$65 per square foot for regular designs and \$200 per square foot for epoxy inlays, it is possible to quickly reach your daily income target.

no limits

Any Size

Owners of the CNC Pro portable engraver are not constrained by the size of the machine. This is because the CNC Pro is mobile, allowing users to easily move it and "tile" out larger projects. The mobility of the machine also allows for versatility in the types of projects that can be undertaken.

One of the largest projects completed using the CNC Pro was a periodic table of elements plaza at the Episcopal School of Baton Rouge. The project was a huge success and is still generating funds for the organization. This showcases the potential of the CNC Pro in creating large and complex projects that can have a lasting impact.

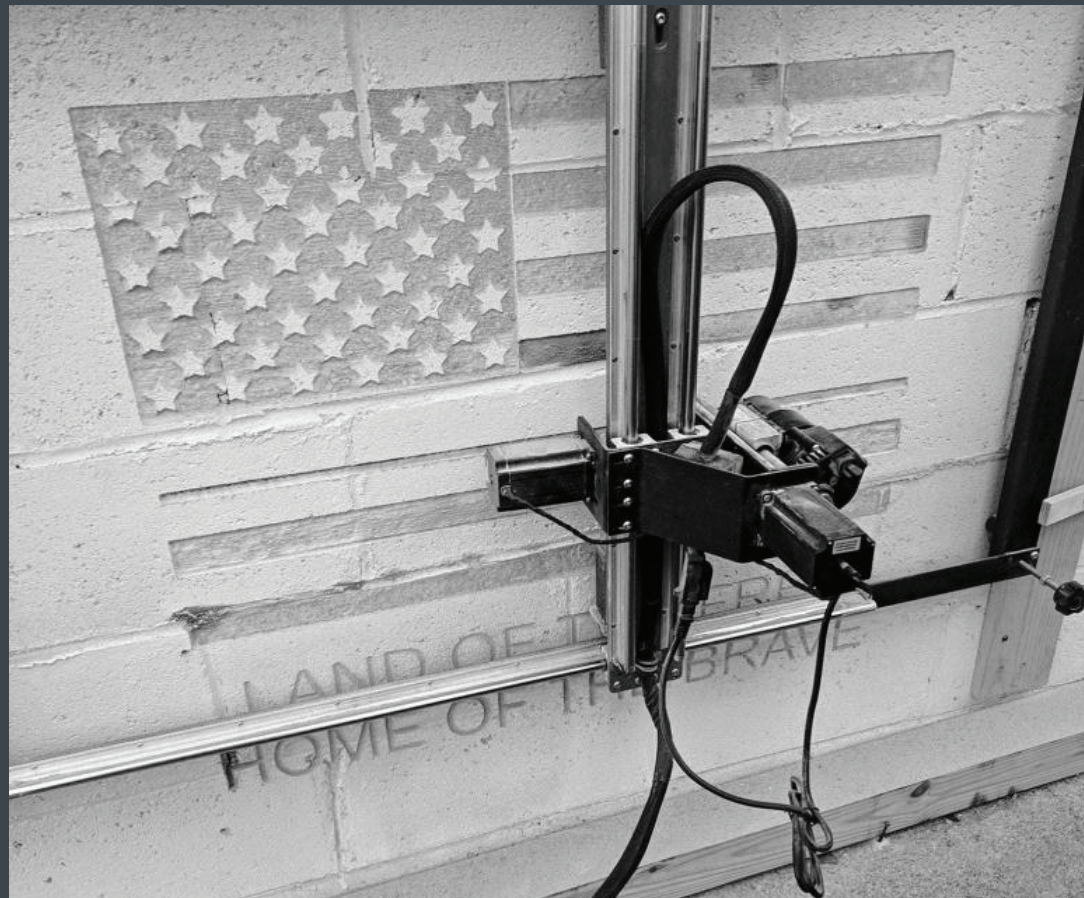


Scan this QR code with a smart phone to view.

Vertical

The CNC Pro isn't limited by the 2D world. This machine is also built to engrave vertically onto walls and other vertical surfaces such as boulders, barricades and brick. Vertical concrete artisans utilize the CNC Pro to add additional detail to their creations.

Add a donor name to a wall, beautify a seawall or existing zoo exhibit. The possibilities are endless.



PASSION + BUSINESS

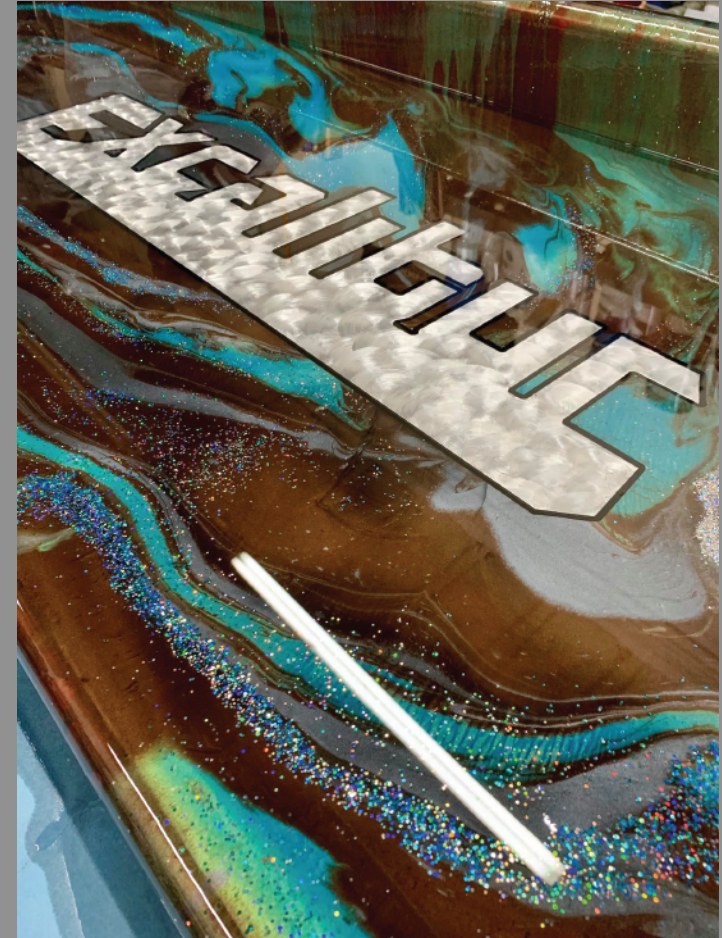
YOU CAN HAVE BOTH.

epoxy

Inlays

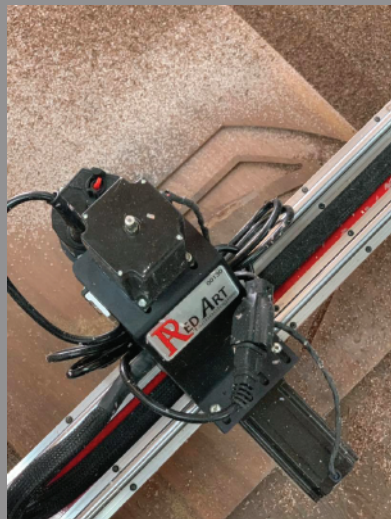
The CNC Pro provides endless possibilities when it comes to creating durable and long-lasting designs. Using epoxy or paint, adding an engraved inlay enhances the design's durability and longevity, especially in high-traffic areas such as shop floors, doorways, and lobbies. Imagine safety signage that never wears out or a brilliant logo welcoming business patrons. The CNC Pro makes all of this possible. Additionally, the vacuum hose attachment ensures that engraving onto existing surfaces is virtually dust-free, ensuring a clean and safe working environment.

Aside from inlays, the CNC Pro can be used to create custom designs for countertops, tables, wall art, colored concrete inlays, signage, and much more. The possibilities are truly endless with this versatile tool, allowing for precise and creative engraving on a variety of surfaces.



wood

Transform your garage or shop into a full-fledged industrial fabrication system with the CNC Pro. This versatile system allows you to engrave onto existing wood surfaces and take your work on-site with ease. With a precision of .006'', create stunning 3D patterns and objects in wood just by clicking a button. The possibilities are endless with the CNC Pro - design beautiful signage, inlay metal, stain or epoxy, and create custom tables, furniture, art, real estate signage, marathon medals, and much more. There is truly nothing on the market that compares to the versatility and precision of the CNC Pro.



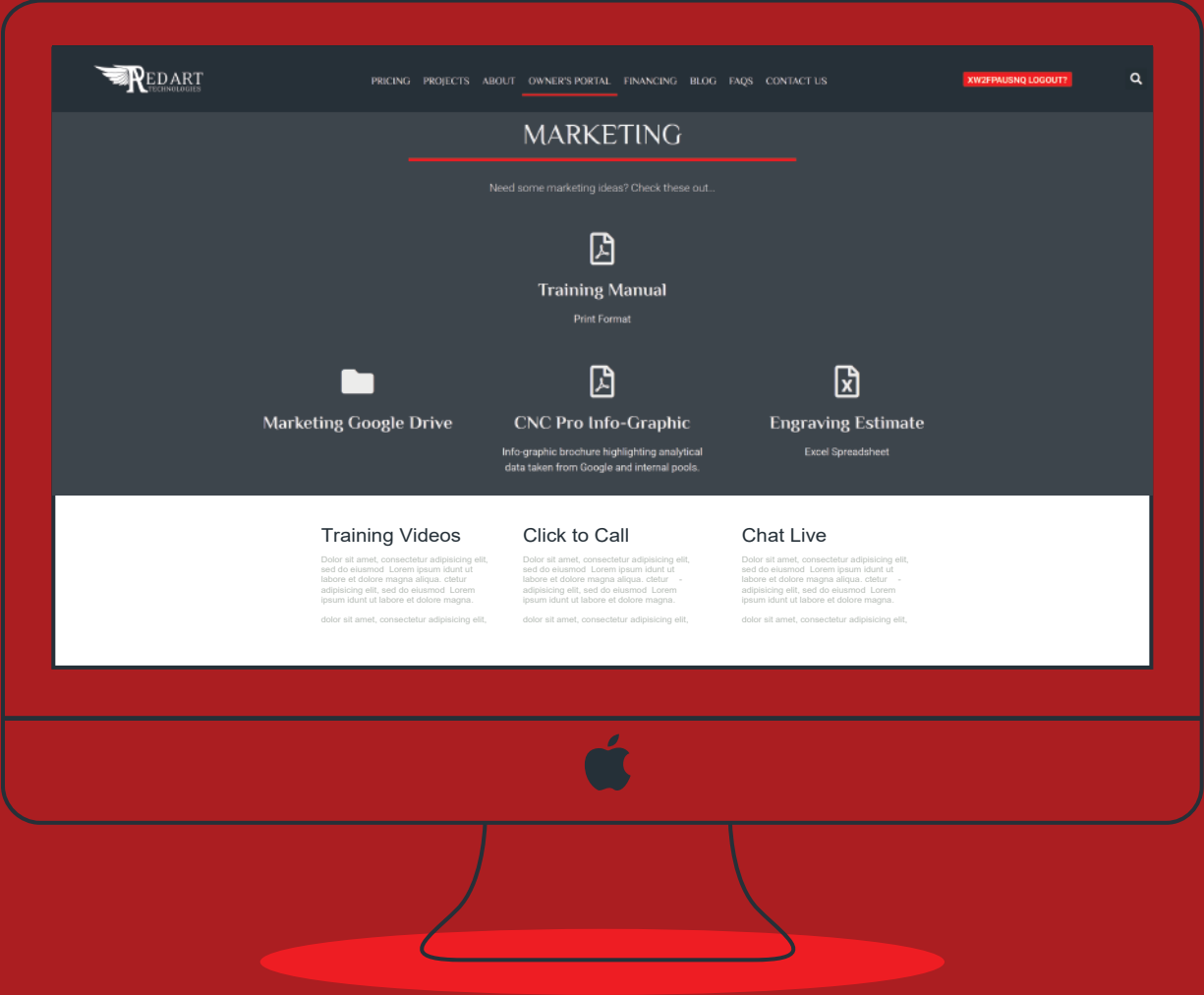
boulders & beyond



The CNC Pro is renowned for its exceptional capability to engrave on vertical surfaces of almost any material, making it a highly desirable tool for creative applications. RedArt Technologies engraving system effortlessly integrates with existing vertical and boulder creative techniques, providing enhanced versatility to users.

Architects are already incorporating CNC CAD designs into their projects, and it is essential to have the necessary tools and expertise to execute these designs. By using the CNC Pro, you can differentiate yourself from your competitors and meet the growing demand for these intricate designs with ease. The click of a mouse is all it takes to engrave stunning 3D patterns and objects onto vertical surfaces with precision up to .006 inches.

Training & Support



tools to succeed

One-On-One Training

In addition to training, we also offer a variety of customizable physical and digital marketing content for our owners. This includes brochures, flyers, business cards, and social media posts that can be tailored to your business's unique branding and messaging. We want to help you promote your business and attract new customers in the most effective way possible.

Warranty & Support

We stand behind our product and offer a non-transferable one year warranty on specific parts of the CNC Pro. This includes the CNC machine, which consists of the rails, stepper motors, gantry, and mounting bracket for the router, as well as the brain box, which includes control boards, power supply, and wiring.



notes

thank|YOU

www.redarttech.com

info@redarttech.com

1-855-9CNCPRO
(1-855-926-2776)